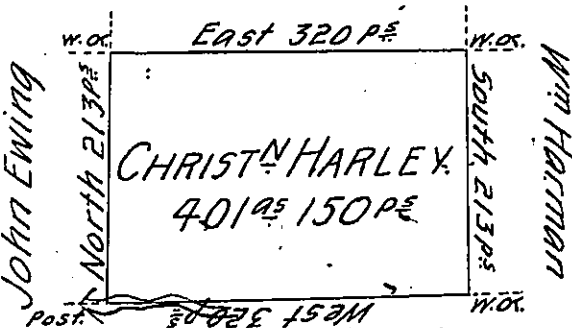


Crawford County
John Brooks Esquire



District line

In Pursuance of a Warrant for 400 acres granted to Christy Harley dated 21th day of April 1794 was Resurveyed the 13th day of November 1817 the above discribed tract of land containing 401^{ac} 150 perches and allowance of six per Cent for Roads &c. It being the same tract of land which was surveyed the 6th day of November 1794 for John Dixon in persuance of his improvement, baring date the 5th day of November 1794. Situate in sandy Creek Township, Mercer County bounded North by Crawford County line, and south by the south line of district N^o 2 known by W^m Power-district, and at the time of executing the same John Williams was Residing thereon and there appered to be upwards of 40^{ac} Cleared fenced &c. on the same.

A. Brown, D.S.

To Jacob Spangler Esquire.

M.C.

Surveyor General, Land Office, Pa }

IN TESTIMONY that the above is a copy of the original remaining on file in the Department of Internal Affairs of Pennsylvania, made conformably to an Act of Assembly approved the 16th day of February, 1833, I have hereunto set my Hand and caused the Seal of said Department to be affixed at Harrisburg, this first day of March 1905.

Loac B. Brown
Secretary of Internal Affairs.